

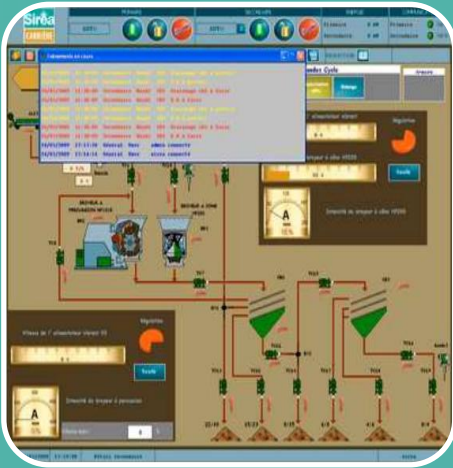
SCADA systems with μ View y μ Server



Why using a SCADA system?

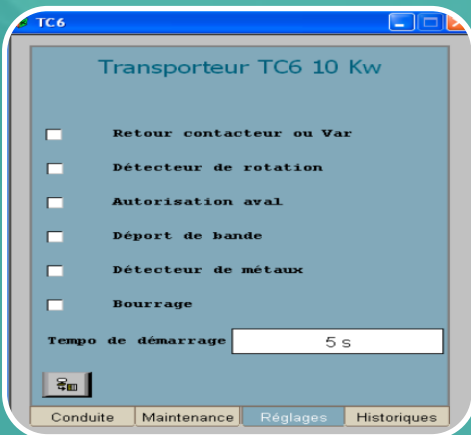
- To be able to continuously operate and monitor processes
- To control and govern the critical operating parameters of the facility
- To store the historical data in order to assist the operator in process control through graphs and additional tools

What needs does the operator have?



Control Screens

- For monitoring and process control
- For controlling facilities



Alarms and security

- Tools for alarm management and programming
- Alerting via email or sms

What needs does the operator have?



Open and adaptable solution

- Open, configurable and customizable solution to all kind of systems
- Compatible with all major PLCs (Siemens, Schneider ...)



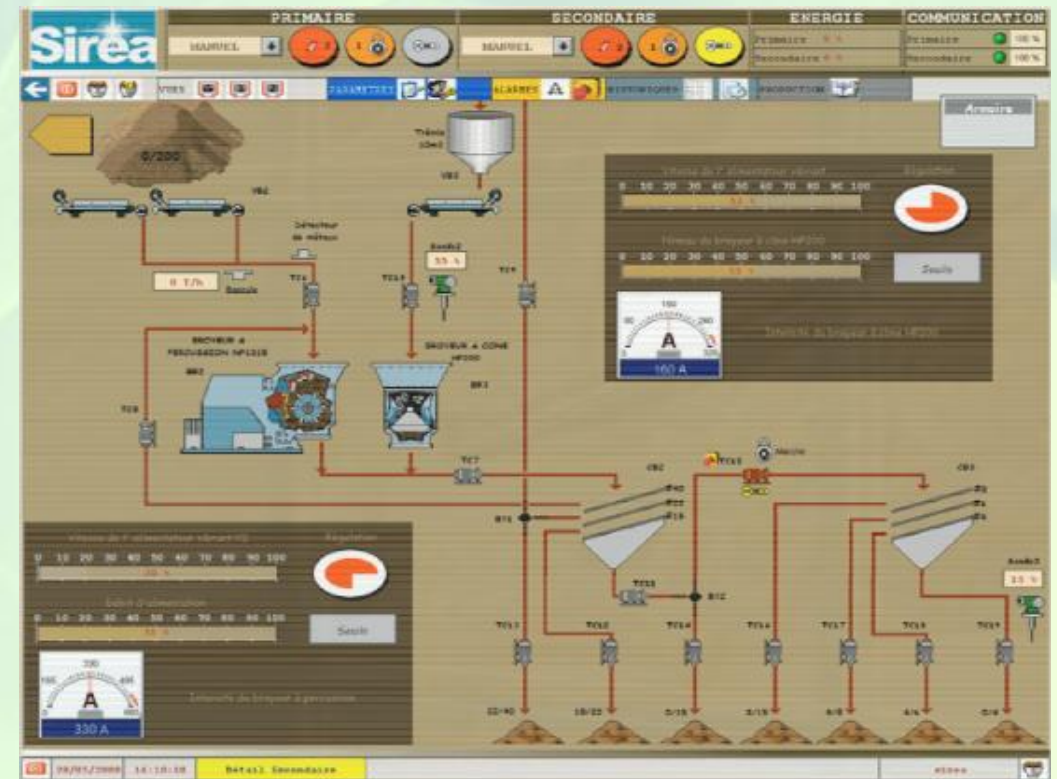
Additional features

- Restrictions on access by users, online monitoring, webcams control and visualization, remote maintenance, etc.

Control screens

The different control screens allow:

- Display of **installation status** from animated synoptics presenting general and detailed equipment statuses
- **Operation and control** of the system in different operating modes
- Display of **Alarms and Events**
- Display of **maintenance actions**



Alarms and security

Alarms and security systems allow to:

- Periodically control **emergency stops**
- Possibility to **neutralize** the account for emergency bodies
- Consultation of the installation **alarm log**
- **Acknowledge** of alarms depending on the rights assigned to operators.

The screenshot displays the Sirea SCADA interface with several key components:

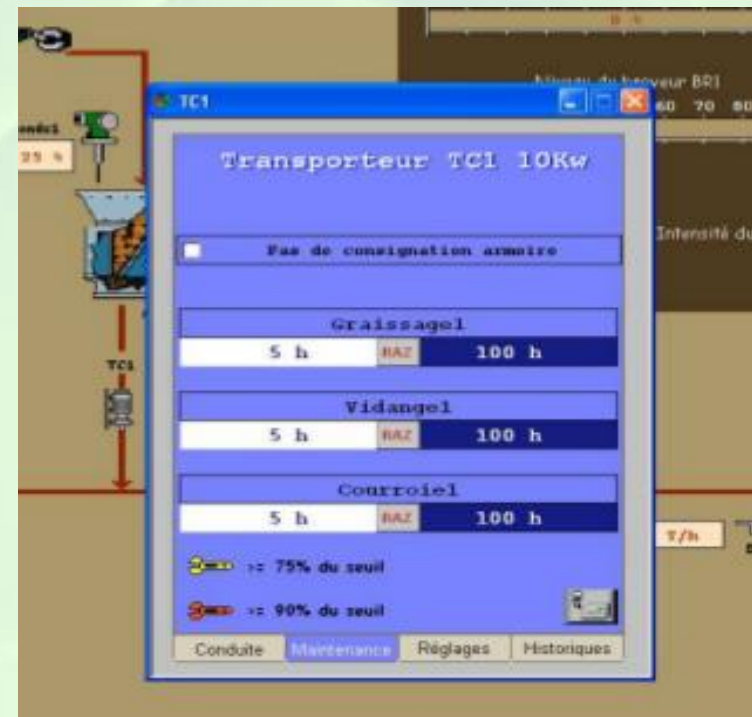
- Top Panel:** Control buttons for 'PRIMAIRE' (AUTO, STOP, RUN) and 'SECONDAIRE' (AUTO, STOP, RUN), along with status indicators for 'ENERGIE' (PRIMAIRE 0%, SECONDAIRE 0%) and 'COMMUNICATION' (PRIMAIRE 99.9%, SECONDAIRE 99.9%).
- Left Panel:** 'Liste des alarmes de Primaire' showing a list of active alarms such as 'GSM1 Installation HS', 'GSM1 Relais securite', 'TC2 Retour marche', and 'SM2 Arrêt urgence déclenché'.
- Right Panel:** 'Evénements en cours' showing a list of recent events with columns for date, time, priority, and description.
- Bottom Panel:** 'Journal des alarmes' displaying a detailed alarm log table.

Date	Time	Priority	Equipment	Commentaire
18/06/2008	10:07:16	Primaire	Apparit. GSM1	Relais securite
18/06/2008	10:07:16	Primaire	Apparit. GSM1	Installation HS
18/06/2008	10:07:15	Primaire	Apparit. SM1	Arrêt urgence déclenché
18/06/2008	10:07:12	Primaire	Apparit. TC2	Retour marche
18/06/2008	10:07:06	Primaire	Disparit. TC2	Retour marche
18/06/2008	10:07:04	Primaire	Acq	toto
18/06/2008	10:06:33	Primaire	Annuit. TC2	Retour marche

Support to maintenance

The maintenance assistance system allows:

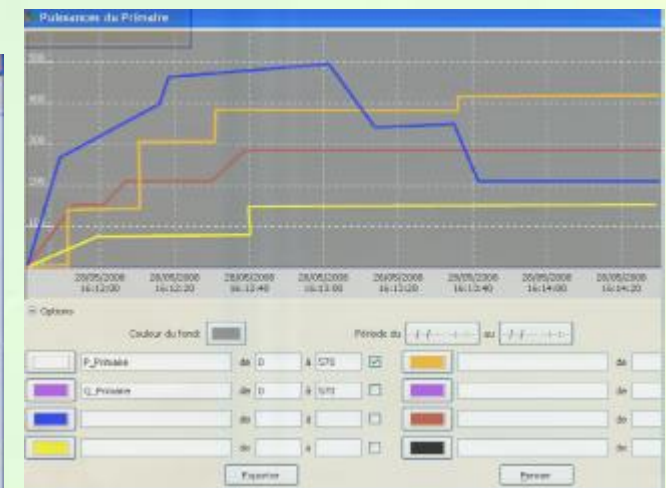
- The synoptic view of **functional status** of equipment with codes defined by **color** (red, green, yellow)
- **Consult logged** events and alarms occurring in an equipment or installation
- Access to **diagnosis sheets**
- Access to **intervention procedures** of equipment



Data Management

The different options of data management allow :

- The **display** of parameters (historical and real-time), display of log tables, display of **curves** (graphs, histograms, etc..), **export** data to csv files.
- Generating and sending **reports** in user-defined periods
- **Analysis** of operation and shutdown (off-line) times of equipment



Open and adaptable solution

The solution proposed by Sirea, either μ View or μ Server, is **open and adaptable**, that is:

- You can configure and apply it to **all types of systems** and installations
- It is a solution **compatible with the market leading PLCs** (Siemens, Schneider, etc..), thus avoiding problems of communication and operation
- It has been designed from **standard software blocks** so it offers great durability in time

Additional features

In addition to the main features of this solution, the system also allows:

- **Online** monitoring
- Diffusion of messages by **email or SMS**
- Control of **webcams** for visual monitoring
- **Telemaintenance**
- **Mobile monitoring** terminals : mobile phone, tablet, etc.



μView y μServer

μView and **μServer** are two solutions designed for complete monitoring of systems and equipment.

Both have the same range of functionalities, although depending on the project, it may be more appropriate to use one option or another.

They are no limited neither in number of variables, nor number of views and both integrate their own **development tool**.

μView y μServer

μView

- SCADA Software adapted to the development of **management and production applications** for industrial processes.
- It allows the start-up of **multi-station** client-server **architectures** for higher flexibility and safety.

μServer

- Solution adapted to the development of **remote control applications** under Web technology.
- More **intuitive** configuration and operation for the user and the integrator.
- It allows to create from **light architectures to more advanced applications** using a large number of remote stations.

The advantages of our solution

The solution offered by μ Server and μ View provides the following **benefits**:

- **Simple** system: **ease** of use by the user
- **Reliable** system: **safe** and **efficient** system operation
- **Complete** system: operation and management of the whole system

All this results into an **optimization** of the process and a reduction of the **costs** of operation and maintenance

For more information: www.sireagroup.com

